

Joshua's Tract Conservation and Historic Trust, Inc.
P.O. Box 4, Mansfield Center, CT 06250-0004

FORTY-FIFTH ANNUAL MEETING & 2010 ANNUAL REPORT

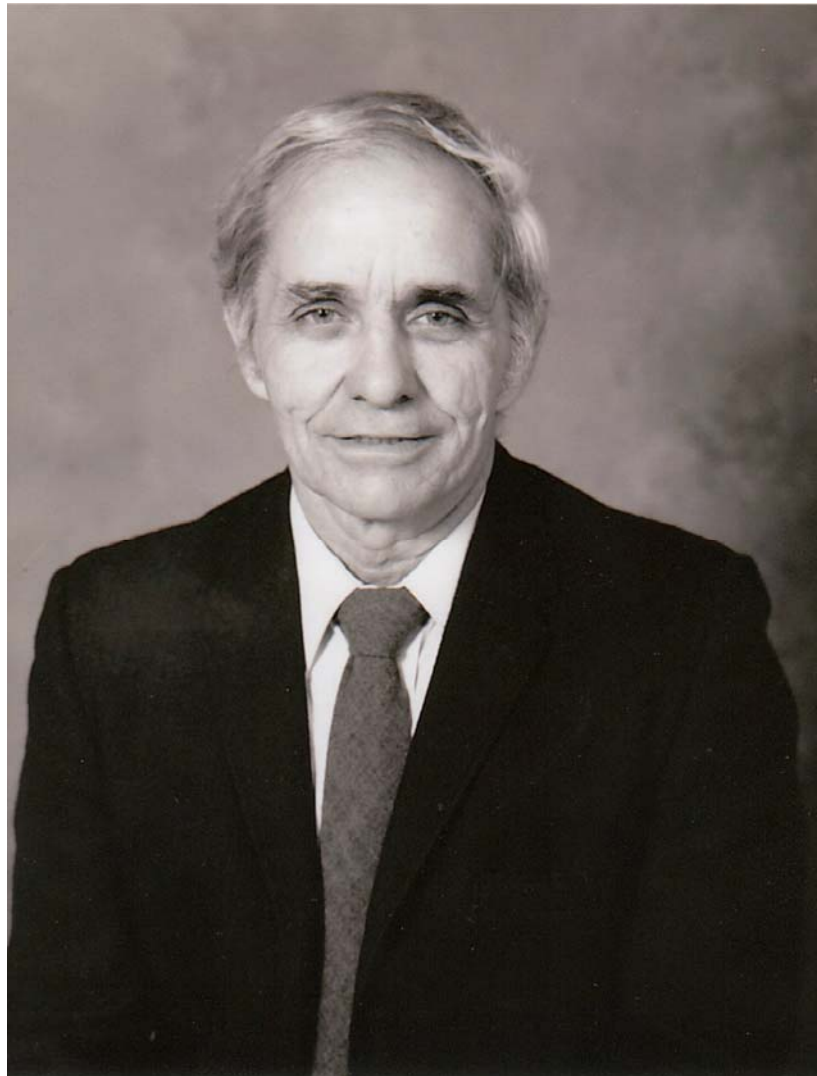
APRIL 12, 2011

6:30 P.M., Knowlton Hall, Ashford, CT



Upper left: Fly Fishing Demonstration at Gurleyville Gristmill, Mansfield; Upper right: from left, Stewardship Committee View Lemek Subdivision Open Space in Tolland; Lower left: Richard Schleicher and Warren Church set Conservation Easement Boundaries at Schleicher property, Lebanon; Lower right: May Dedication Ceremony on the shores of Lake Marie, Allanach-Wolf Woodlands, Windham





*Richard Albert "Dick" Schleicher
April 29, 1933 – February 22, 2011*

This year's Annual Report is dedicated to Richard "Dick" Schleicher, who died at home in Lebanon on February 22, 2011. Dick said not long ago that his job on earth was to learn things, and he felt that he had learned a great deal from all of his many pursuits, from serving in the Air Force, to teaching science, to farming, to gardening, to local politics.

Dick was a true friend of Joshua's Trust. He considered JT the best organization he had ever been associated with. He loved the land, and believed that "if you take care of the land, it will always take care of you." He granted a conservation easement on his large property because it was "the right thing to do." Over the years, he served as a steward, led walks, and rolled up his sleeves to do whatever had to be done.

His unassuming warmth, his generosity, and his wry sense of humor will be sorely missed.



TM pending

Joshua's Tract Conservation and Historic Trust, Inc.

P.O. Box 4, Mansfield Center, CT 06250-0004

Telephone & Fax: 860-429-9023

Email: joshuastrust@snet.net Website: www.joshuaslandtrust.org

FORTY-FIFTH ANNUAL MEETING

APRIL 12, 2011

TABLE OF CONTENTS

Agenda for Forty-fifth Annual Meeting.....	Page 4
Letter from the President	Page 5
Mission Statement / Officers and Trustees.....	Page 6
Committee Membership.....	Page 7
Committee Reports.....	Page 8-12
Accreditation.....	Page 12
Our Volunteers.....	Page 12-13
Forty-fourth Annual Meeting Minutes: April 13, 2010.....	Page 13-14
Treasurer's Report.....	Page 14-15



AGENDA

FORTY-FIFTH ANNUAL MEETING

6:30 PM, TUESDAY, APRIL 12, 2011

Knowlton Hall, Ashford, CT

1. President's Opening Remarks (Allison Burchell-Robinson)
2. President's Award (Allison Burchell-Robinson)
3. Approval of the Forty-Fourth Annual Meeting Minutes April 13, 2010 (Members)
4. Action on Amendments to the Joshua's Trust Articles of Incorporation (Members)
4. Treasurer's Report (Tony Holt)
5. Nominating Committee Report (Mona Anderson)
6. Election of New Trustees (Members)
7. Conservation Awards (Greg & Mona Anderson).
8. Adjournment (Allison Burchell-Robinson)

Our guest speaker will be Rudy Favretti who will give a presentation entitled: *IT'S ALL IN THE NAME: THE TRUST AND ITS MILL SITES*. He will talk about the history of the Gurleyville mill and other mill sites on Trust properties.

Rudy Favretti was an early member of the Trust and has continued to support it in many ways. He was a Professor of Landscape Architecture at the University of Connecticut and has published many books and journal articles about historic preservation and landscape architecture. He has won many awards for his work in landscape and historic preservation. Local residents may be familiar with his book co-written with Isabelle Atwood on Wormwood Hill.



Letter from the President

Allison Burchell-Robinson, April 12, 2011

Joshua's Trust is 45 years old . . . or, given our mission of saving and preserving land forever, the better way to say it is: Joshua's Trust is 45 years young. Whatever way you choose to view it, we have accomplished much over those years. We protect more than 4,000 acres owned or under conservation easements in fourteen towns in the Northeast section of Connecticut. We have a strong and energetic Board of Trustees and committed Officers. Our Committees are active and well managed. Our members are supportive and caring. Over all, we're in good shape at age 45.

The natural progression allows that we are five years away from turning 50, a milestone of no mean measurement which we plan to celebrate in style. An Anniversary Committee has been formed to start planning the event, compiling pictures, assembling clippings and marking important dates and achievements. If you have anything to contribute to this assemblage, please get in touch with Vice President Mona Anderson.

As we begin the progression towards turning 50, we are already in the midst of laying a new foundation for the second half of our millennium. One cornerstone is national accreditation by the Land Trust Accreditation Commission - an independent program of the Land Trust Alliance. Joshua's Trust is one of just four in Connecticut which has been accredited, and one of only 130 nationally. It is even more impressive when you consider that Connecticut has 115 land trusts and there are more than 1700 nationwide. Your land trust has come a long way.

The seal of accreditation that you see on the cover of this annual report signifies that Joshua's Trust meets national standards of excellence, upholds the public trust and ensures that conservation and stewardship of our preserves and easements are perpetual. But, what does it really mean to us? It means that we reached for the top, and having achieved that, must continue to reach higher. We met the high standards set by the LTA Commission only to learn there are expectations for improvement. We will meet those expectations, but we also have to meet the expectations of you, our members, as well as those who have donated their land or given an easement on their land.

We will need to be better organized, better funded, and better positioned to respond to the needs of the Trust. Those will be the other cornerstones of our new foundation. It will take time, but we will be ready. Did I mention that we will need to apply for reaccreditation in five years? It appears we have a job description in place.





MISSION STATEMENT

As specified in the Trust Document, Article II, the goals of the trust are to:

- Preserve the rural character of the area for the benefit and well-being of the inhabitants;
- Acquire and assure the preservation and maintenance of land in the interest of conservation of natural resources and development of an open-space program;
- Acquire and assure the preservation and maintenance of land and/or improvements to land having a unique and historical significance to the area;
- Engage in and otherwise promote the scientific study of local natural resources including plants, animals, birds and other wildlife;
- Preserve and maintain areas for education and training in nature lore and camping.

Officers 2010-2011

President	_____	Allison Burchell-Robinson
Immediate Past President	_____	Warren Church
Vice-President	_____	Mona Anderson
Vice-President, Acquisitions	_____	Richard Hyde
Secretary	_____	Carol Enright
Treasurer	_____	Tony Holt
Assistant Treasurer	_____	Pat Mochel

Trustees 2011-2016

Carol Enright, Marc Lang, Corine Norgaard, Juan Sanchez, Jr.
Terms expiring in 2011

Marcia Kilpatrick, Nancy Polydys
Terms expiring in 2012

David Jordan, Don Cianci
Terms expiring in 2013

Deborah Lee, Bonnie Ryan, Margaret Welch, Patricia Szczys
Terms expiring in 2014

Ted Taigen, Robert Dubos, Melanie Johnston, Eric Thomas
Terms expiring in 2015

Scott Matthies, Brent Gottier, Sarah Fusco, Nancy Silander
Nominees with terms expiring in 2016



COMMITTEES 2010-2011
(Note: Committee Chairs are in *italics*.)

Committees Designated in BYLAWS

Executive Committee: *A. Burchell-Robinson*, President; W. Church, Immediate Past President; M. Anderson, Vice-President; R. Hyde, Vice-President for Acquisitions, Carol Enright, Secretary; H. Holt, Treasurer; P. Mochel, Asst. Treasurer; D. Jordan, M. Kilpatrick, Members-at-Large.

Investment Committee: *H. Holt*, A. Burchell-Robinson, R. Beers, B. Gottier, P. Mochel, J. Sokoloski, D. Jordan

Finance Committee: *D. Jordan*, A. Burchell-Robinson, M. Manfred; B. Gottier, H. Holt, P. Mochel, J. Pagini

Membership Committee: *B. Ryan*, M. Johnson, N. Polydys, Madge Manfred, Kathy McCarthy

Nominating Committee: J. Sanchez, C. Norgaard, M. Lang, C. Enright

Stewardship Committee: *J. Hill*, D. Donahue, W. Robinson, H. Bullard, A. Dunnack, G. Griffin, K. Hankinson, Corinne Rueb, R. Dubos

STANDING COMMITTEES

Conservation Restrictions (Easements) Committee: *W. Church*, R. Beers, J. Freeman, J. Hankins, P. Szczys, W. Smith, M. Welch; J. Pagini, *ex officio*

Development Committee: *C. Norgaard*, A. Burchell-Robinson, C. Enright, I. Atwood, R. Gottier, N. Polydys, M. Manfred

Gristmill Management Committee: *I. Atwood*, A. Barstow, F. Cazal, A. Gray, J. Hayden, W. Hilding, S. Levinson, G. Meitzler, R. Munhall, F. H. Pechler, W. Thorne

Land Acquisition Committee: *R. Hyde*, D. Cianci, C. Enright, R. Gottier, M. Kilpatrick, P. Andersen, M. Lang, W. Church, J. Hill, J. Sokoloski; J. Pagini, *ex officio*

Legal Committee: Attorney Steve Bacon, Advisor; Attorneys Bill Dakin, Danielle Angliss, Dennis Poitras, Donald Cianci, William Breslau

Newsletter Committee: *P. Stern* (*editor*), M. Manfred. Mailing Coordinator: J. Seeber

Public Outreach Committee: *J. Sanchez, Jr.*; J. Manfred; D. Lee; T. Taigen

Events Committee: *I. Atwood*, M. Anderson, J. Seeber, N. Silander

Ad Hoc: Conservation Awards Committee: *G. Anderson, M. Anderson*

50th Anniversary Committee: *M. Anderson*, I. Atwood, R. Favretti, W. Church

Additional APPOINTMENTS

Archivist: J. Blanshard

Web Master: Gail Chernosky

Church Farm Liaison: P. Szczys

Walk Book Distributors: B. Lehmann, J. Wolf, T. LaVoie, L. Magnuson, N. Polydys



STEWARDSHIP REPORT

The Committee met 5 times during the year. Maura Robie joined the Stewardship Committee as a Regional Coordinator. Bob Dubos joined the Committee from the Board of Trustees. The Committee oversaw the following activities:

Permits:

- A dendrochronology research project was approved and conducted at Windham Bog in June 2010.
- One new scientific research project was approved for 2011. A Master's degree candidate at UConn will be conducting aquatic invertebrate and amphibian inventories at several properties while trying to draw correlations between protected land and biodiversity.

Management Plans:

- A professional Natural Resource Inventory (NRI) has been completed for Allanach-Wolf Woodlands. A long-term Management Plan will be completed by June 2011.
- A 9-month NRI is underway at the Lemek Subdivision Open Space, the Trust's new property in Tolland, with a Management Plan to follow before year's end.
- The Trust drafted a Management Plan for the Sage Meadow Open Space in Tolland. The Trust has a Conservation Easement on the majority of this open space parcel. The Management Plan was accepted this fall by the Tolland Town Council.

Grants:

- A WHIP (Wildlife Habitat Improvement Program) grant to control invasives control and improve Wood Turtle habitat at Preston Sanctuary was approved by the Natural Resources Conservation Service and is active through 2012. To date the Trust has received over \$2000 in "reimbursements" and has put part of that towards the purchase of more equipment to control invasives on other properties, as well as at Preston.
- Concerning EastConn, Joshua's Trust's Grant is in its second and final year. In 2010, several field trips and a Bio-Blitz at the Church Farm were sponsored under this grant. In 2011, funding will be used to host a field trip for students to carry out barberry control method evaluation and for vernal pool studies at Knowlton Hill. The program will culminate in a "for students only" Bio-Blitz in May, 2011 at Allanach-Wolf Woodlands.

Stewards:

- Three new stewards were recruited and trained.
- A workshop was held in December, 2010 at the Preston Preserve to demonstrate barberry control techniques.
- Steward preserve monitoring & work: approximately 940 hrs.

GIS/GPS

- KML files for all preserves with trails have been used to enhance the Trust's website pages for these properties.
- The handheld GPS units continue to be used to map baseline data for new properties and easements as well as boundary information.

Volunteers

- Student volunteer groups worked this year at Pigeon Swamp Preserve and at the Ashford Oak. A single UConn student put in 51 hours of trail work this fall, while a recent forestry major graduate is volunteering for 3 months doing invasives and boundary work.
- Trails Crew Membership is holding steady at 33 members.
- Trail crews put in a total of 473 volunteer hours. This does not include stewards taking part in work parties on their own preserves nor hours by groups such as the Boy Scouts under their own supervision.

Preserve Management:

Natural Resource Inventory:

- The Connecticut Botanical Society conducted a one-day inventory at the Rankin Preserve.
- The Church Farm Bio-Blitz resulted in the identification of 541 species resident on Trust and ECSU property.

Improvements:

- 2 new kiosks were erected, one at Allanach-Wolf, one at Hubbard. Brochure boxes were added to all kiosks. Six new preserve signs were erected. Fencing was erected in front of the Ashford Oak. A bridge at Knowlton Hill was re-decked. An interpretive panel was installed on a kiosk at the Mason Mill Site.

Trails:

- A half-mile loop trail was created at Lof Woodland, and a half-mile loop trail was created at Agnes' Pasture.

Habitat Management:

- Brush/invasives clearing along agricultural fields at Preston, Broadway Meadow, and Hubbard
- Early Succession/meadow restoration or maintenance at Pigeon Swamp, Byles
- Invasives control at Preston Sanctuary, Center Meadow

Work Parties:

- Grist Mill maintenance and clean-up, sign/kiosk construction & installations, boardwalk/ bridge repairs, tree/brush/ invasive removal, new trail, painting of garage at A-Wolf

Contract Work:

- Mowing and Invasives Treatment at Pigeon Swamp
- Snow-plowing, limb-trimming, parking lot preparation, etc., at A-Wolf

LAND ACQUISITION REPORT

Land acquisition is a process that is highly dependant upon confidence by land donor(s), including their families, that the Trust will faithfully carry out their wish to preserve and protect their property in the future. Meeting and talking with land owners considering donating to Joshua's Land Trust can be a lengthy process and does not end until the potential donor feel confident all their questions have been answered and they are confident the Trust will care for their property as they wish in perpetuity. The process is complicated involving individuals, families, possibly Town boards and their staff, the Trust's Committees and the Board of Trustees.

During February of 2010 the Trust was contacted by the Town of Tolland to see if the Trust would be interested in accepting the 27.2 acres open space component required in a 57.315 acre eight lot resubdivision proposed by Lemek Acres LLC off Lemek Lane and Goose Lane. The primary benefits

to accepting this property would be the permanent protection of approximately 600 feet of the Skungamaug River and its buffer area. The Skungamaug enters the western portion of the property about halfway down the western boundary where it meanders to the southwest and exits the parcel into property owned by The Coventry Game Club, Inc. On November 30, 2010 this parcel of open space land was finally transferred to the Trust.



MEMBERSHIP REPORT

<u>Membership Category</u>	<u>1/09-12/30/09</u>	<u>1/10-12/30/10</u>
Benefactor	10	9
Patron	45	54
Sustaining	113	107
Family	298	278
Individual	188	163
Honorary (Land)	45	31
Lifetime	3	7
TOTAL	702	649



DEVELOPMENT COMMITTEE REPORT

The Development Committee held two major fund raising events during the past year. The first was the Trust's second annual wine tasting held at the home of Charles McCaughtry. Those attending were able to enjoy wine and the art work of Charles, who generously donated part of the proceeds of each painting sold to the Trust.

The second event was a tag sale held in early September. The Development Committee wishes to thank the many members of the Trust who contributed items to sell and also those who worked at the tag sale. We would especially like to recognize Richard Schleicher, who died recently, and who did a terrific job as our cashier throughout the event and also gave strong support in displaying the items we had for sale and disposing of those that were left over.

We have continued to promote Life Membership. We added 6 new ones in 2010: Keith and Marietta Johnson, Madge and John Manfred, Michael Curtis, Daniel Reilly, John Lof and Joe Courtney. One new Life Member has been added in 2011, Jean Haskell.

Under the leadership of Carol Enright, we have continued to offer various types of Joshua Trust items for sale including hats and tee shirts.



PUBLIC OUTREACH REPORT

Joshua's Trust sponsored five (5) walks for Walktober 2010. The other major event was co-coordinated with EASTCONN. This was a two-day Bio-blitz, day one, students only, and day two was with the public and over a dozen volunteer scientists from UCONN, ECSU, and other parts of Connecticut. Additionally we conducted two teacher workshops for Bio-blitz classroom teachers. The Trust co-sponsored a Mother's Day Bird Walk with the Chaplin Conservation Commission. A Trout release program was conducted by John Manfred and members of Trout Unlimited in May. This program was held at the Grist Mill location on the Fenton River and involved school children and teachers. John and other Trout

Unlimited members worked with a school group (Ashford School) and taught the children about fly tying.

A public dedication of the Allanach-Wolf Woodlands was held on May 23. This included a walk of the trails.

Continuing business:

We are hoping to repeat the Bio-blitz on a small schedule this Spring (May, 2011). We are working with the Quiet Corner Camera Club on a Trust property Photo Display. This is being coordinated by Marcia Kilpatrick.

We are hoping to set up a Student Stewardship program with UCONN natural resources students. This would start in the Fall of 2011 if all goes according to plan.



ACCREDITATION

After five years of preparation, Joshua's Trust received notice that it earned national accreditation as this report was being prepared, which signifies that Joshua's Trust meets national standards of excellence in upholding the public trust and ensuring that conservation efforts are permanent. The accreditation is a landmark achievement for a largely volunteer organization. The accreditation process required the Trust to undergo a rigorous external examination of its management, systems, and policies used to protect its lands. Voluminous documentation had to be submitted to the Land Trust Accreditation Commission, an independent program of the [Land Trust Alliance](#), based in Washington, D.C. Only four of Connecticut's 126 land trusts have received accreditation, and nationally only 7.6% have proved that they are meeting the national standards.

Preparing for accreditation required a significant investment of the Trust's resources; however, the decision to do so was based on the realization that after more than 40 years of service, the Trust needed to align its operations with professional standards, many of which are driven by changes in the IRS requirements for non-profit groups and conservation organizations.

All of the trustees backed the application, but several volunteers deserve recognition for preparing a successful application. First, Jean Haskell, former secretary of the BOT, organized all the forms and co-chaired the Accreditation Committee for two years. Dave Jordan, a key member of the committee, assembled the documentation on stewardship of properties, and John Pagini on Conservation Easements. Joan Hill developed systematic management plans for all the properties. Maura Robie developed the baseline documentation reports for the more than 60 conservation easements under the oversight of Warren Church. Tony Holt and Pat Mochel put together countless financial reports. Karen Mills digitized and copied all our files, and John Pagini facilitated digitizing of all of our maps. John also created the digital submission, and organized and with the help of Warren Church moved original files and maps to a secure second location. At the eleventh hour, two of our pro-bono attorneys, Steve Bacon and Danielle Angliss, gave us their full attention to produce legal documents that were needed. Finally, it came down to President Allison Burchell-Robinson driving around on a Friday afternoon to get the last few items submitted. Her support all along was invaluable.

Although Joshua's Trust has been managed carefully and members have been generous, the Trust's endowment funds, needed to ensure the permanent protection that we promise, are far below the national standard. Our accreditation was approved with the understanding that we will now undertake a vigorous endowment campaign to build those reserves.

Madge Manfred, Chair



PUBLICATIONS

Four newsletters were produced in 2010, edited by JT member Paul Stern, who is also an editor at the *Hartford Courant*. Newsletters are mailed to members, libraries, commissions, and other conservation organizations. A crew of mailing volunteers, organized by Jane Seeber, has sent out nearly 1,000 copies of each newsletter. Northeast Utilities printed 2,000 copies of the informational brochure for the Trust as a public service. We continue to sell copies of the Joshua's Tract Walk Book.



WEB MASTER REPORT

The trust website, <http://www.joshuaslandtrust.org> , was updated with improved property pages, maps and photographs submitted by Trust members. An archive of past news, events and newsletters was compiled and posted online. Stewardship information was updated, pictures and mini-bios were added for trustees, chairs and committee heads. Better image handling galleries were installed using jquery. More links to and from the website were established, and online news and a list of directory sources was started. These online resources, from local newspapers to the USGS, were contacted with updated information.

Joshua's Trust has an entry in Wikipedia, the online encyclopedia. You can view the page at: [http://en.wikipedia.org/wiki/Joshua's Tract Conservation and Historic Trust](http://en.wikipedia.org/wiki/Joshua's_Tract_Conservation_and_Historic_Trust) . Projects in progress include official Flickr and Facebook pages for Joshua's Trust.



JOSHUA'S TRUST VOLUNTEERS

In addition to those listed as officers, trustees, and committee members, the following volunteers contributed to the approximately 1,750 hours of service during 2010.

Thank You, JT Volunteers, One and All!

Stewardship Volunteers

Peter Andersen • Greg & Mona Anderson • Isabelle Atwood • John Barclay • Tom Bloom • Joe Blyksal • Denise Burchsted • Joe Charron • Albert Ching • Greg Cichowski • Ruth Cutler • Ann Dunnack • Martha Fraenkel • Jack Fulton • Leon Gardner • Claude Garritt, Jr. • Gary Griffin • Henry Gruner • Gwen & Roald Haaland • Deborah & Robert Haas • John Hankins • Ken Hankinson • Christine Hare • Mike Hayden • Joan Hill • Kay & Tony Holt • Richard Hyde • Harry Johnson • Keith Johnson • Ronald Kelly • Marc Lang • Terry Lavoie • Scott Lehmann • Kitty LeShay • Neal Lewis • Carl & Julie Lindquist • Kate Lynch • Lance Magnuson • John Manfred • Scott Matthies • Charles McCaughtry • Michael McGlynn • John McGrath • Charlene & John Meyer • John Morey • Rich Moynihan • Ruth Moynihan • Robert Munhall • Harold Nelson • Richard Norgaard • Ray Nurme • Valerie Oliver • Greg Padick • John Pagini • Wendy Parker • John Perch • William Philbrick • Steven Rackliffe • Joann Reynolds • John Reynolds • Wally & Allison Robinson • Betty Robinson • Corrine Rueb • Peggy Rux • Art Runnels • Juan Sanchez, Jr. • Richard Schleicher • Robert Schoff • Craig Smith • John Sokoloski • Ann Marie Starck • Arthur Steele • Henry Swart • Rachel Tambling • Michelle Tompkins • Steve Toubman • Julie Victoria • Greg Vasileff • Richard Weingart • Carl & Karen Wyatt • Nord Yakovleff

Regional Coordinators

Ann Dunnack • Gary Griffin • Ken Hankinson • John Pagini • Maura Robie • Corrine Rueb

Conservation Easement Monitors

Peter Andersen • Hank Bowers • Warren Church • Tom DeJohn • Joanne Freeman • Roseanne Gottier
• Gary Griffin • Joan Hill • Tony Holt • Richard Hyde • Quentin Kessel • Wayne Kilpatrick • Marc Lang
• Terry LaVoie • Lance Magnuson • Charles McCaughtry • John Meyer • John Pagini • Corinne Rueb •
Juan Sanchez, Jr. • James Stebbins • Kathy Stebbins • Paul Stern • Ted Taigen • Jasmine Wolf

Mailing Volunteers

Jane Seeber, Coordinator • Isabelle Atwood • Betsy Cameron • Albert Ching • Jean Haas Eileen
Kennedy • John & Madge Manfred • Mig McCarrick • Carol Phillips • Jean Rice Bonnie Ryan • Barbara
Troyer



DRAFT MINUTES – Forty-Fourth Annual Meeting, April 13, 2010

The 44th Annual Meeting was held at The Hole-in-the-Wall Gang Camp in Ashford. Approximately 180 members and guests enjoyed dinner and informal discussion. A camp tour and gift shopping were also available. President Warren Church called the meeting to order in the dining hall at 7:50 p.m. Warren Church welcomed all. He thanked Mona Anderson for organizing the event and The Hole-in-the-Wall-Gang-Camp staff for the food and hospitality. He referred attendees to the *Forty-Fourth Annual Meeting and 2009 Report* for a detailed review of the Trust's recent activities and accomplishments. In particular, he mentioned that the Trust passed the 4,000-acre mark for protected land and acquired the 110 acre Allanach-Wolf Woodlands in Windham, this past year. He invited all to the Wolf property celebration on May 23.

Church reported that the application process for LTA Accreditation is ongoing. As a result, we now have Management Plans for all 60 properties and Baseline Reports for all 59 easements. He remarked that we experienced 60% growth in the last 10 years and that the new Long Range Plan anticipates 60% growth in the coming 10 years. As a 95% volunteer organization we will need more funds and more members.

The Trust members approved the minutes of the 43rd Annual Meeting.

Corine Norgaard, Chair of the Development Committee, noted that we gained several new Lifetime Members, hosted a Wine Festival that raised approximately \$3,000, and continued to sell Walk Books, caps, tee shirts, tote bags, and pins. She invited all to attend this year's Wine Festival, to be held at the Ashford home of artist Charles McCaughtry on May 14, from 5-7 p.m. She urged everyone to donate to and attend the Trust's Tag Sale scheduled for September 11.

Treasurer Tony Holt reported that the Trust's finances are in great shape. The balance sheet shows that our assets were up \$651,000 and our investments rose from a low of \$674,000 to \$882,000 at year's end. Our goal now is to build up our endowments to take care of our land.

Allison Burchell-Robinson of the Nominating Committee introduced the four new Trustees with terms expiring in 2015. They are Bob Dubos of Chaplin, Melanie Johnston of Hampton, Ted Taigen of Tolland, and Eric Thomas of Coventry. The motion to elect them passed. Four people have also been appointed to fill partial terms. They are Bethany Busch of Andover, Don Cianci of Columbia, Deborah Lee of Eastford, and Nancy Polydys of Scotland.

Joan Hill, Stewardship Chair, thanked all 77 Stewards and called upon Gary Griffin to present Terry Wakeman with the Stewardship Award in the form of a miniature kiosk, representing the kiosks he installed on seven preserves. She invited all to the BioBlitz at the Church Farm in June.

Warren Church awarded the President's Citation to Tony Holt, Assistant Treasurer, Pat Mochel, and Membership Chair, Marietta Johnson, the core of JT's congenial and efficient Thursday afternoon office staff.

Greg Anderson presented this year's group Conservation Award to Dan Donahue, accepting for the Norcross Wildlife Federation, for being the group that best represents the purposes of the Trust. They protect over 8,000 acres of land and provide funding to other like-minded organizations.

Warren Church presented the individual Conservation Award to Madge Manfred, former President, Chair of the Accreditation Committee, editor and chief writer of the Newsletter, tireless recruiter, and true to her cowboy boots, personnel wrangler extraordinaire.

Incoming President Allison Burchell-Robinson thanked outgoing President Warren Church for his three years of service presiding over the Trust as it topped the 4,000 acre mark and developed its Long Range Plan, while heading the Conservation Restriction (Easement) Committee. Church received a card and gift for his new companion in semi-retirement, puppy Addie Church.

The meeting adjourned at 8:35 p.m. A presentation by Dr. Elizabeth Farnsworth of the New England Wildflower Society, on "Plants and Habitats that are the Focus of Conservation Efforts in Connecticut" followed in the theater.



TREASURER'S REPORT

The detailed financial report for the year ending 12/31/10 is available on request. This is not an audited statement, which we will get later in the year; but it does fairly show the financial condition of the Trust. That condition is excellent and certainly better than it has been for the past three years.

Highlights of the detailed financial statements are as follows:

Balance Sheet

- For the total fiscal year of 2010, total assets increased by \$141 thousand. Cash was up \$34 thousand, investments were up \$101 thousand and there were additions of land totaling \$6 thousand.

Income Statement

- Operations showed a gain of a little over \$9 thousand for the year. We did not take any of the budgeted income from the investment fund. If we had taken an amount equal to the employee expense for the year, the gain would have been \$27 thousand.

Gristmill

- Major repair activity at the Gristmill was dormant for the year as it was last year. Results for the year showed a modest gain in excess of \$3 thousand. A major renovation of the Cross house kitchen, including some new appliances, has begun.

Investments

- At year end the value of investments was at the same level as the high in 2007. At the date of the writing of this report the value had gone over \$1 million.
- The Investment Committee met in October and Leora Garner, of Laurel Grove Capital, attended. At that meeting discussion centered roughly on two topics, asset allocation and the Trust's need for available cash in order to increase the funding of various Easement Protection accounts. Leora felt that we should consider moving towards a 70-30 asset allocation and offered

compelling reasons for doing so. Fixed income assets have very, very low yields at present and their prices are, accordingly, quite high. The result of the discussion was that the committee decided to stay at a 60-40 allocation but to approve a move towards 70-30 should Leora find the situation amenable to such a move.

I am pleased to report that Trust operations continue to be in good shape and the financial condition of the Trust remains strong.

Respectfully submitted,
Hamilton Holt-Treasurer

Preliminary Financial Summary for the Year Ending December 31, 2010

Joshua's Tract Conservation and Historic Trust, Inc.

This report is based on our complete financial summary available upon request, and was produced by T. Holt.

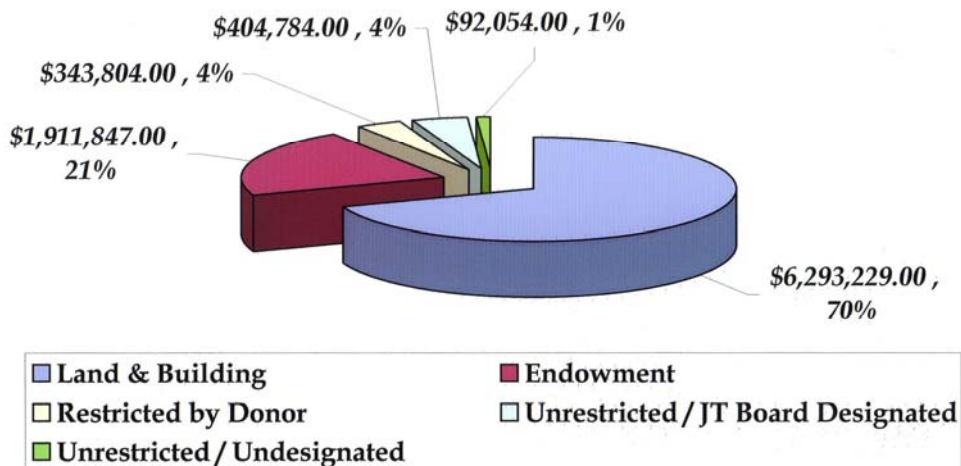
Source: Financial Statement dated 12/31/10

Statement of Activities-Operating Fund (Jan.-Dec. 2010)					
Income			Expenses		
Miscellaneous Income	16.3 %	\$ 16,637	Land Acquisition	9.8 %	\$ 8,787
Grant Revenue	12.0 %	\$ 12,220	Professional Services*	31.6 %	\$ 28,492 *
Membership Dues	23.2 %	\$ 23,645	Office **	38.0 %	\$ 34,247 **
Cash Contributions	33.6 %	\$ 34,261	Membership	6.9 %	\$ 6,248
Land Contributions	5.3 %	\$ 5,421	Miscellaneous	1.3 %	\$ 1,192
Fund Raising	9.6 %	\$ 9,737	Stewardship	12.4 %	\$ 11,184
Total Income	100.00 %	\$101,921	Total Expenses	100.00 %	\$ 90,114

* Professional Services of the Conservation Coordinator are largely related to Stewardship & Land Acquisition

** The majority of Office expenses are related to Stewardship or Membership expenses

Joshua's Tract Conservation & Historic Trust, Inc. Balance Sheet Equity Accounts December 31, 2010



NOTE: Only 1% of total JT equity or \$92,054, is not already designated for a special use, either by the donor or the Board of Trustees.



A Fall Day on Lake Marie, Allanach-Wolf Woodlands, Windham, CT

Joshua's Tract Conservation and Historic Trust, Inc.

P.O. Box 4, Mansfield Center, CT 06250-0004

Telephone and Fax: (860) 429-9023

Website: www.joshuaslandtrust.org



Joshua's Mark (TM Pending)