



Trails on both sides of Knowlton Hill Road wind through 127 acres of woods and fields past Knowlton Pond and then to the crest of a glacial drumlin, which affords a commanding view of the Mount Hope River valley and the pond.

The area is surrounded by working farms, many of which are preserved through agricultural trusts and easements.

A small off-road parking area is available at the edge of the hayfield. Nearby is a kiosk with a large map of the trails as well as a loose-leaf trail guide corresponding to 10 sign posts. This guide may be borrowed to take along on your walk.

Property Rules:

To protect the integrity of the habitat, all pets must be leashed

No motorized vehicles

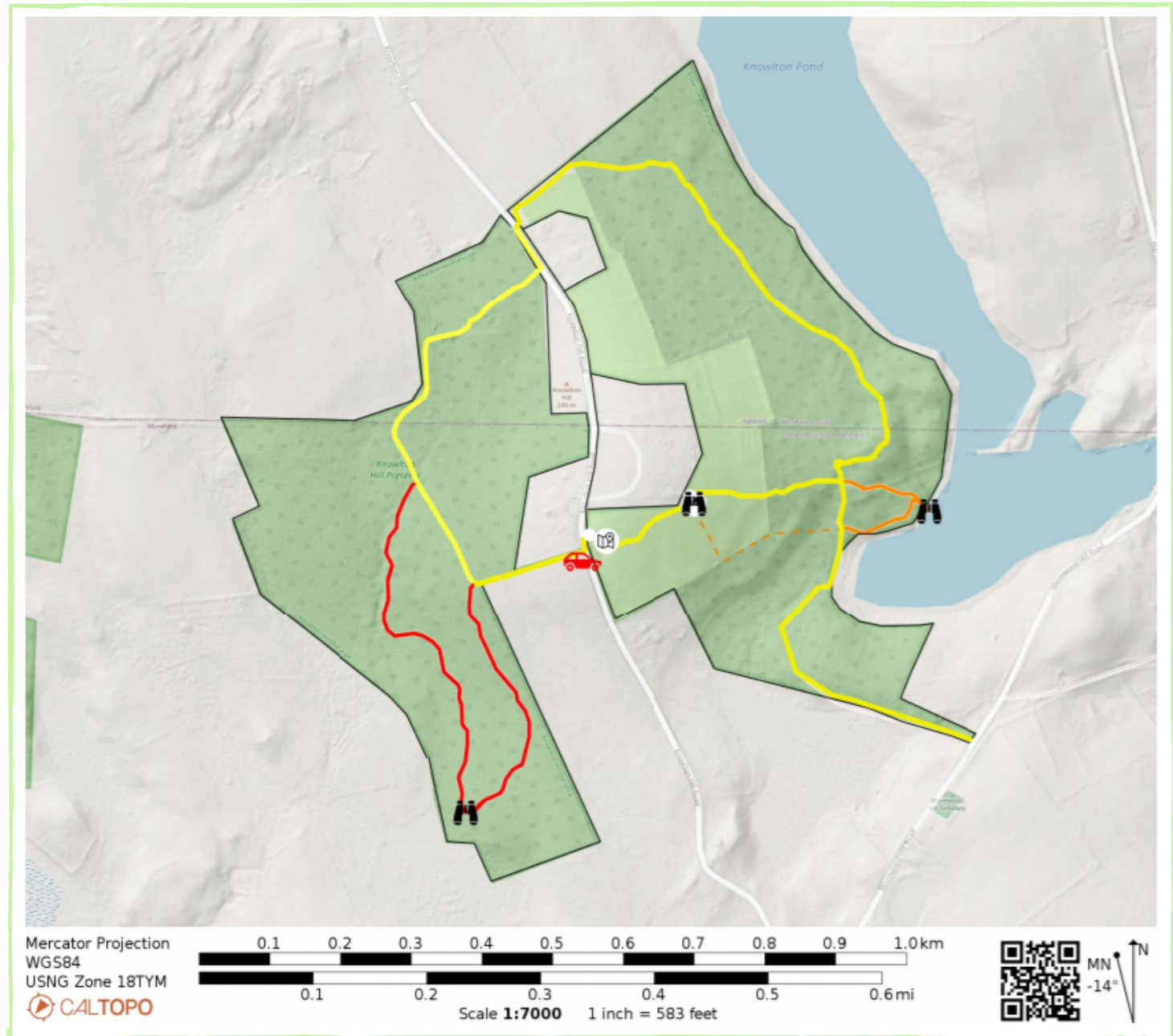
No Hunting

No Camping

No Fires

To report a problem, please contact us at:
860-429-9023 or administration@joshuastrust.org


Learn More about the Trust at:
joshuastrust.org



Legend

 Yellow Trail
1.4 miles

 Red Trail
0.6 miles

 Orange Trail
0.2 miles



Scenic View



Parking Area

